

Application

Servomotors are designed to rebuild control mechanisms by means of a direct, reversible move and constant speed. Servomotors control mainly the closing and pressure reducing valves.

Functional description

- selectable rated force and speed of movement
- selectable input signal
- selectable output signal
- selectable position microswitches
- hand operation inside (outside) cover



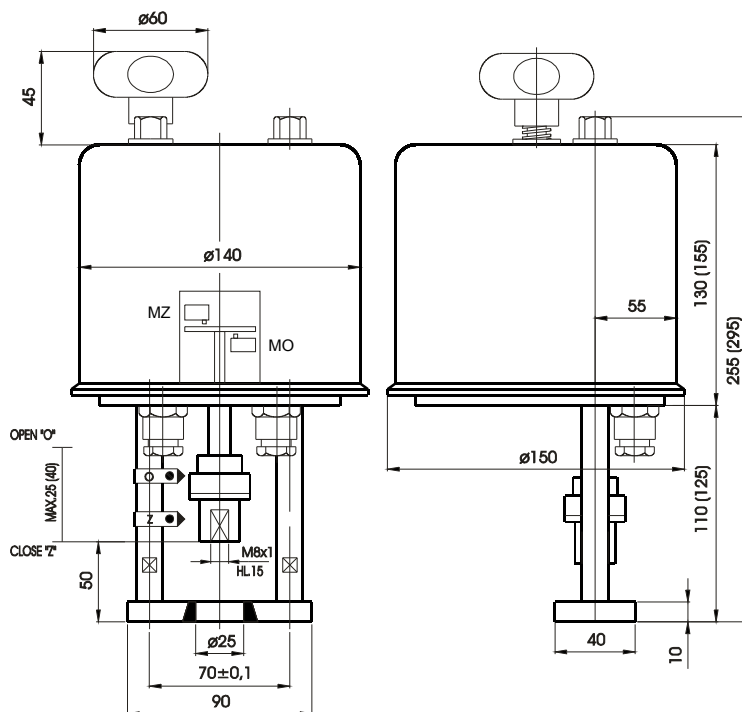
Technical data

- rated force 0,6-1,2 kN
- speed of movement 10-16-25 mm/min
- input 3 point driving
4-20 mA
0-10 V
- output 100 ohm resistance
R/I 4-20 mA
R/U 0-10 V
C/I 4-20 mA
- rated force switches
- adjustable position switches
- heating resistor
- supply voltage 230Vac/24Vac
- frequency 50/60Hz
- power drain max 19 VA
- ambient temperature -20 až 60°C
- housing protection IP65
- weight 4 kg

Certification

- EC declaration of conformity
- ISO9001/2000

Overall dimensions



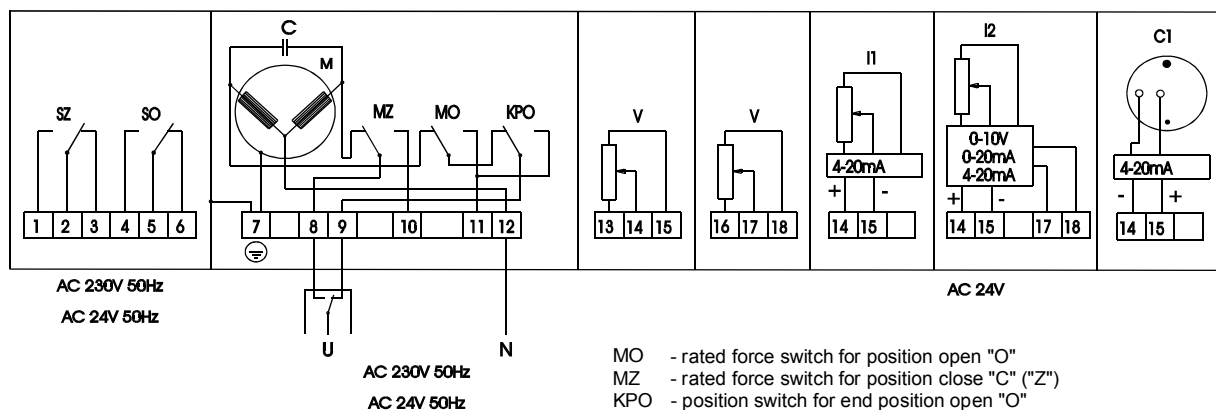
Specification table

PTN2-	XX. X X.X X.X X		
20		2 kN	Rated force
25		2.5 kN	
32		3.2 kN	
40		4 kN	
99		acc. to the agreement	
0		230V/50Hz/60Hz	supply voltage
2		24V/50Hz/60Hz	for 60Hz ops.add 20% to the speed
1		10 mm /min	Speed of movement
2		16 mm /min	
3		25 mm /min	
4		32 mm /min	
0		without	
1		output 0 - 10 V	resistance/U or I type
2		output 0 - 20 mA	24V AC/DC - four wire type
3		output 4 - 20 mA	
4		output 4 - 20 mA	24VDC - two wire type, R/I
5		output 0 - 100 ohm	resistance only transmitter
6		output 2 x 0 - 100 ohm	
7		C/I output 4 - 20 mA	capacitace/current type
9		acc. to the agreement	
1		flange D=25mm, columns spacing 70mm, clutch M8x1	
2		flange D=44mm, spindle with cutting, bracket clutch	
3		flange D=65mm, columns spacing 100mm, clutch M10x1	
4		columns M16, spacing 100mm, clutch M12	
5		columns M12, spacing 110mm, clutch M12x1.25, BR11 type	
6		flange D=57.5mm, clmn.spacing 100mm,clutch M2x1.25, BR12	
7		flange D=44mm, spindle with cutting D=7, RV113 type, 20mm	
8		flange D=44mm, spindle with cutting D=10, RV113 type, 40mm	
9		acc. to the agreement	
0		MO, MZ	count and type of switches
2		MO, MZ, SO, SZ	MO, MZ - rated force open/close
4		MO, MZ, KPO	SO, SZ - adj. position switches
6		MO, MZ, SO, SZ, KPO	KPO - end position switch
9		acc. to the agreement	
2		10 mm	bar elevation
3		16 mm	
4		20 mm	
5		25 mm	
6		32 mm	
7		40 mm	

Table is relevant for 3 point driving input.

According to agreement it is possible to provide servodrives with analog control input 0-1V, 0-10V, 0-20mA, 4-20mA. In this case order as PTN 2-XX.XX.XX.XX / control 4-20mA / RO (RO - hand operation)

Schematic diagram



- MO - rated force switch for position open "O"
- MZ - rated force switch for position close "C" ("Z")
- KPO - position switch for end position open "O"
- SO - position switch for position open "O"
- SZ - position switch for position close "C" ("Z")
- M - electromotor
- C - condenser
- V - resistance transmitter 100 ohm
- I1 - resistance transmitter with R/I converter 4-20 mA - two wire type
- I2 - resistance transmitter with R/I converter 4-20 mA - four wire type
- C1 - capacitance transmitter with C/I converter 4-20 mA